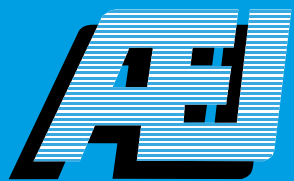


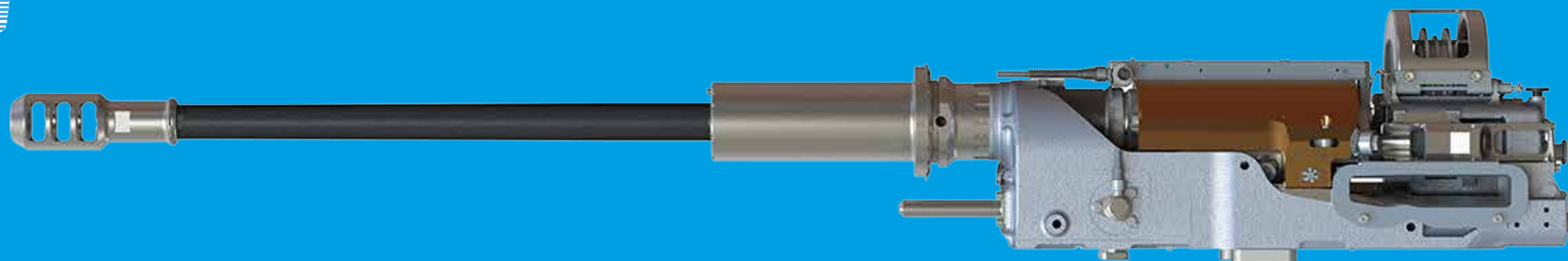
VENOM

AEI SYSTEMS



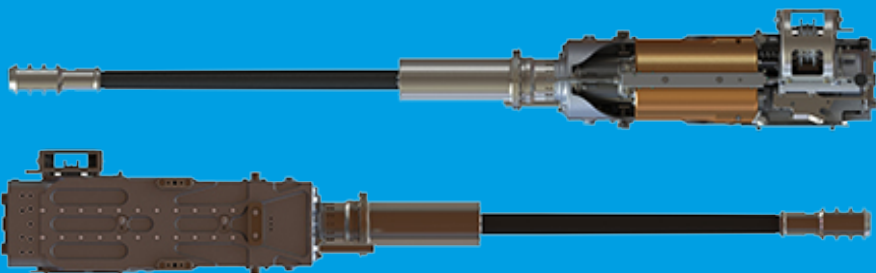
VENOM

30 mm GUN



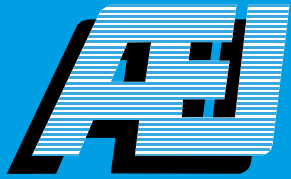
SPECIFICATIONS

- Calibre: 30 mm x 113 mm
- Range:
 - 2,000 m effective
 - 3,000 m maximum
- Rate of fire:
 - Single shot
 - 230 spm
- Gun mass: 110 kg (242 lb)
- Barrel length: 1,4 m
- Overall Length: 2.04 m
- Height: 240 mm
- Width: 235 mm
- Barrel mass: 15.3 kg
- Muzzle velocity: 765 - 805 m/s
- Recoil Force: 22 kN mean
- Cocking System: Mechanical & Electrical
- Firing System: Electrical: 28 VDC

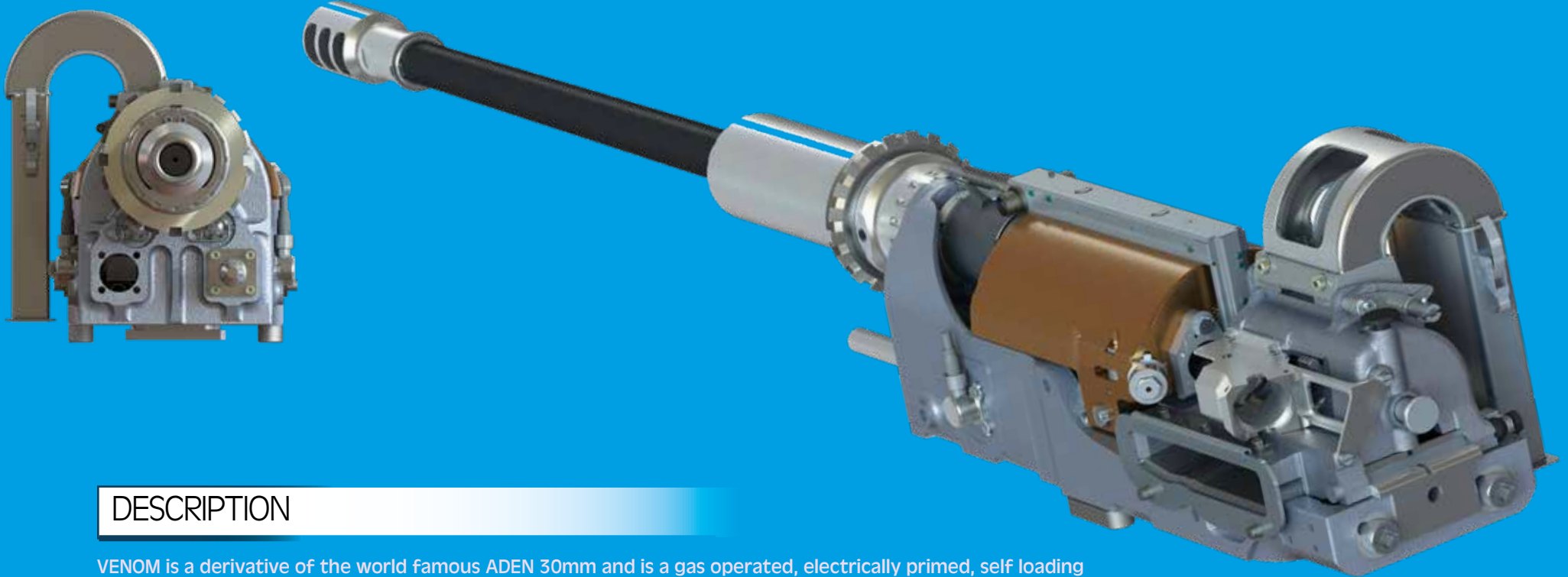


AMMUNITION 30 mm x 113 mm

- HEI High explosive incendiary
- HEIT High explosive incendiary tracer
- AP Armour piercing
- TP Target practice
- TPT Target practice tracer
- APT Armour piercing tracer
- HEDP High explosive dual purpose



VENOM 30 mm GUN



DESCRIPTION

VENOM is a derivative of the world famous ADEN 30mm and is a gas operated, electrically primed, self loading revolver gun. Configuration is similar to ADEN but with a lengthened barrel for optimised velocity, a muzzle brake for reduced recoil and a barrel aligned recoil buffer for improved accuracy.

With an effective range to 2000 m and the selectable option of single shot and 230 spm, VENOM's ADEN heritage makes it a highly price competitive, non-ITAR alternative to the M230 LF Chain Gun.

Designed for Turret, Remote Weapon Mount and Naval installations, VENOM is compatible with NATO standard ADEN/DEFA 30 x 113mm ammunition as well as M788 and M789 variants.

VENOM is another AEI Systems in-house design and is manufactured to aircraft standard quality entirely in the UK.

WWW.AEI-SYSTEMS.COM